

Save • Someone's life

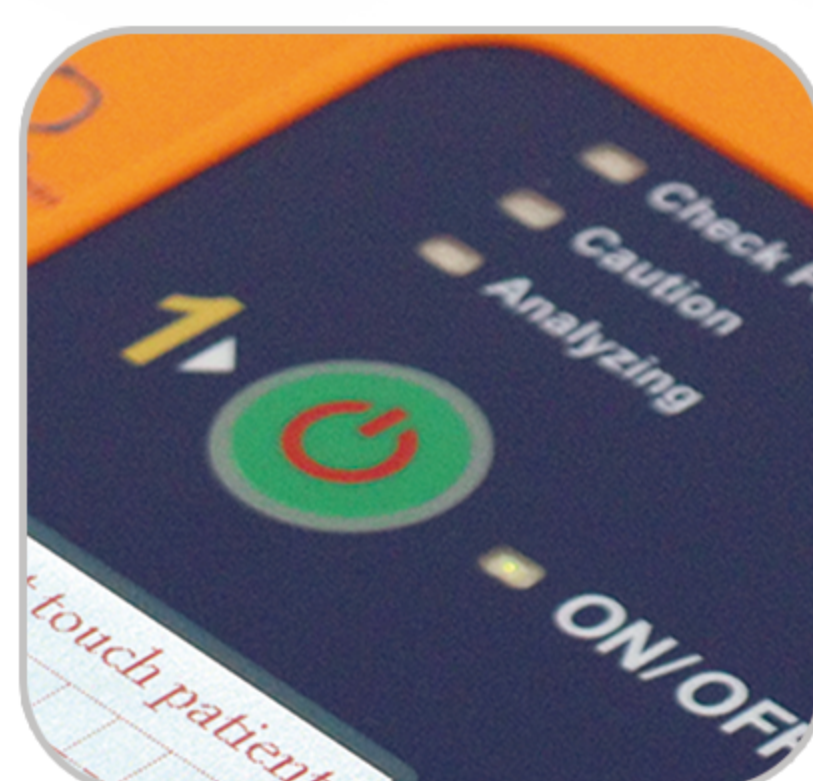


Defi[®] 5S eXtra
Automated External Defibrillator

Defi[®] 5S eXtra

Automated External Defibrillator

ONE BUTTON FOR **HEART**..



Start the device

1

Turn on the device.

The voice prompt immediately begins with instructions on how to operate the AED.



Attach the pads to the patient

2

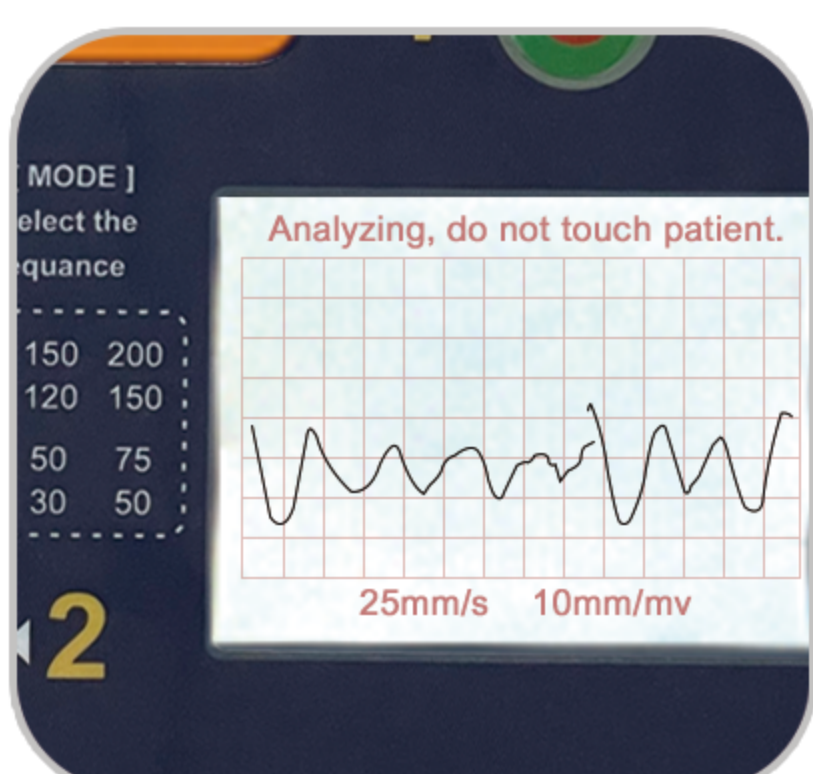
After the electrodes are attached, the AED immediately begins analysing the ECG. The device does not proceed to the next step until you have properly attached the electrodes.



Select energy

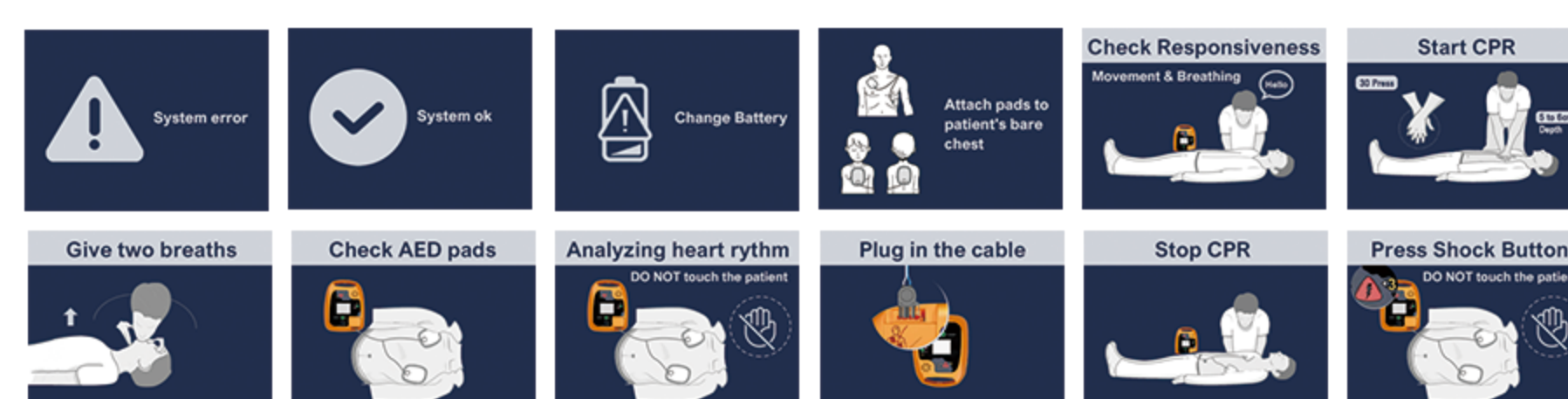
3

International resuscitation guidelines recommend reducing energy for children to avoid burning the heart muscle. The Meditech Defi 5S series can reduce the energy to 30.75J by simply selecting the energy range.



Follow instructions

4



Turn on the device, the screen displays images System OK or not, battery replacement, insertion of pads, display of true heart rhythm wave, shock recommendation or not, CPR procedure ECG display: speed: 25mm/s, gain: 10mm/mv



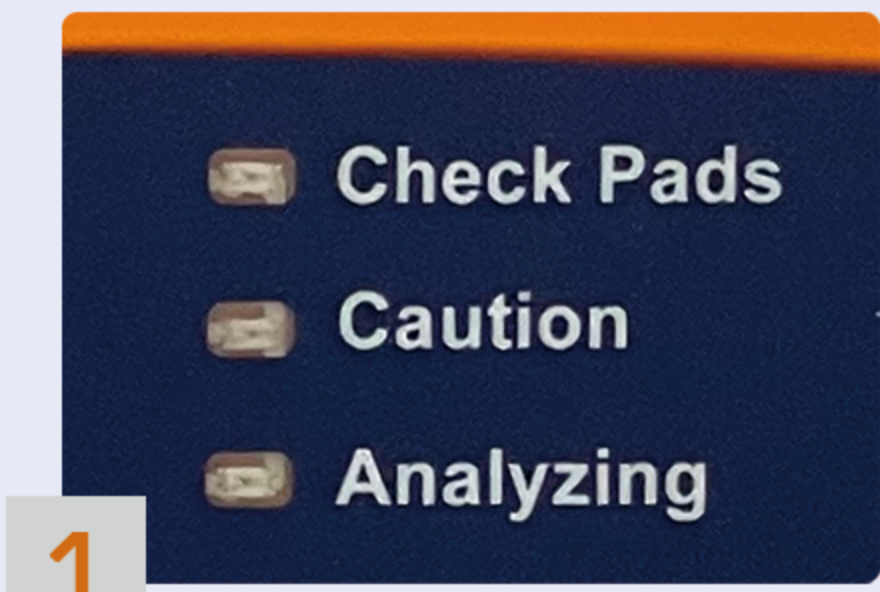
Press the button

5

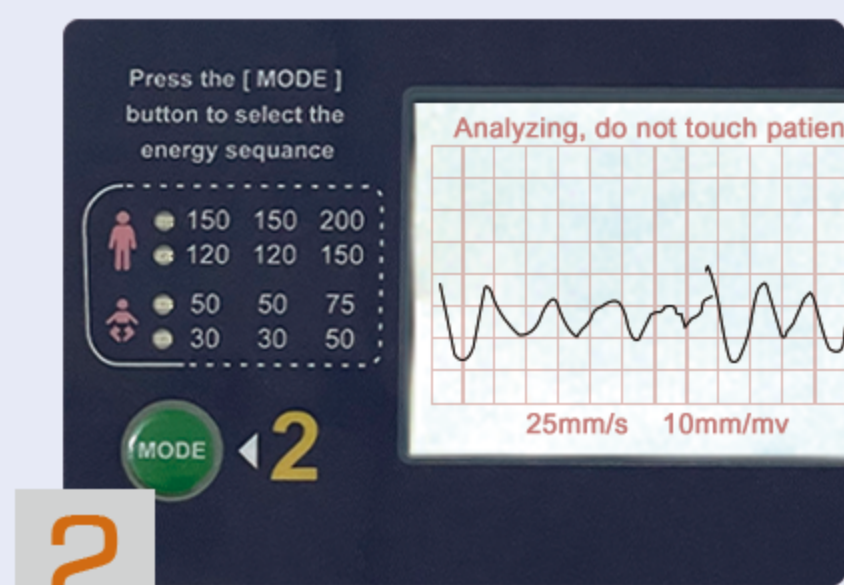
When the shock is needed, Press the button to deliver the electric shock to the patient.

WHY

Advantages



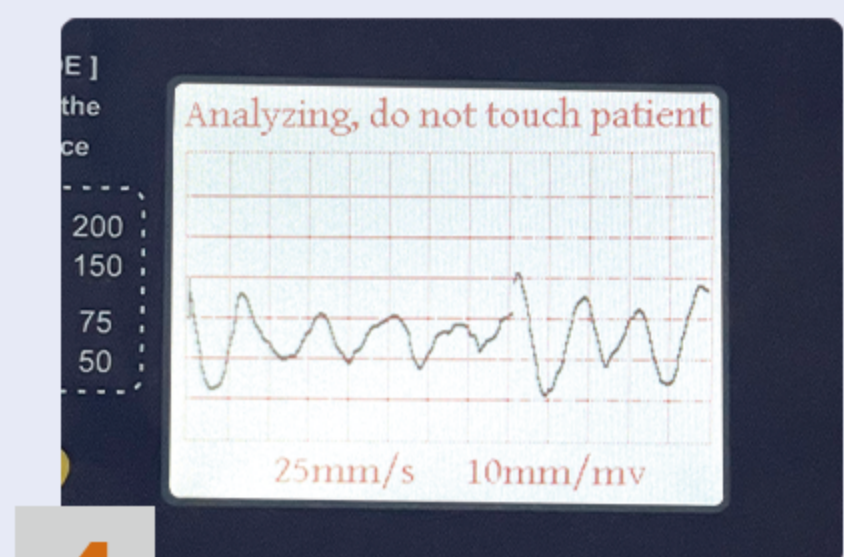
1 LED Indicators
Color LED indicators for each step



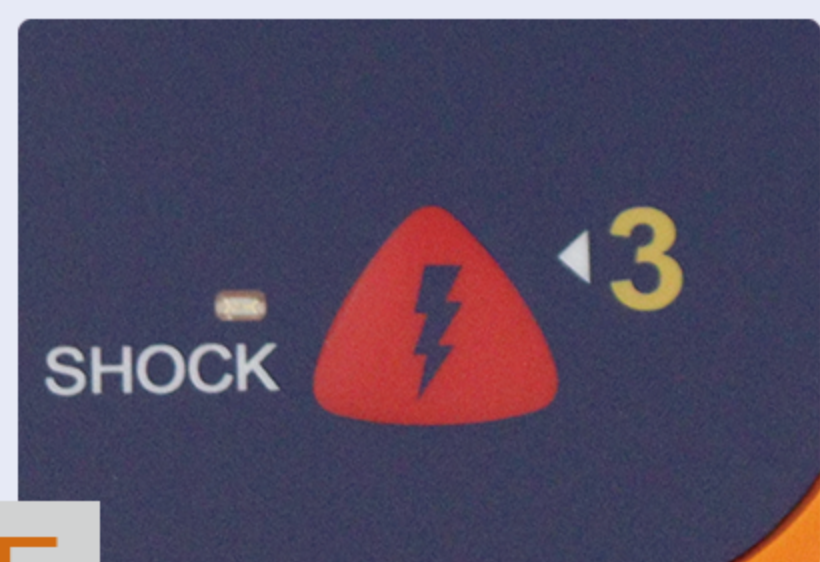
2 Energy Sequence Selectable
Energy sequence selectable 30J to 200J for different age groups and situations



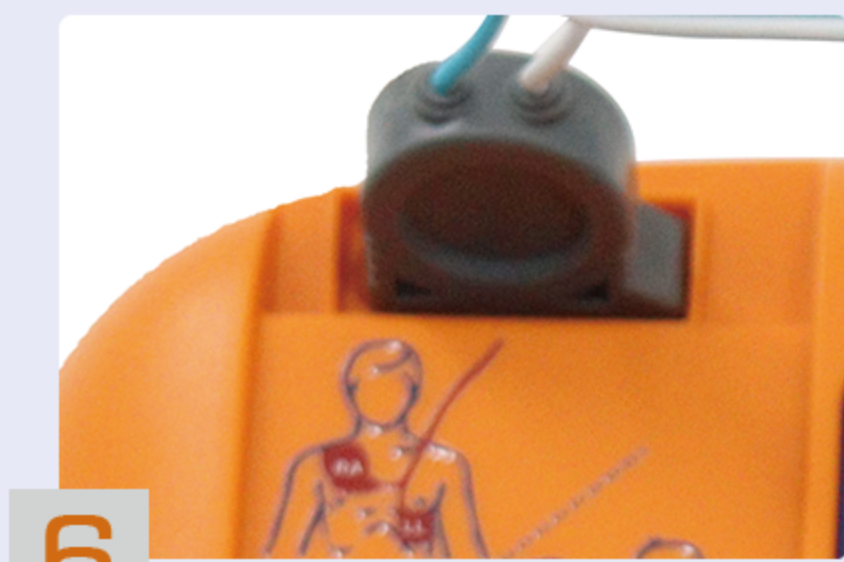
3 Loud Speaker
High quality speaker design Provides great and loud sound that makes it easy to hear the device's instructions in public places



4 Display
Device situation. AED use. ECG rhythm. CPR procedure ECG waveform (velocity: 25mm/s, ECG gain: 10mm/mv)



5 Buttons
Waterproof buttons and soft



6 Pads Connector Socket
Socket for pads plug



2 Languages
Selectable



Child Mode
50.50.75J
30.30.50J



Adult Mode
150.150.200J
120.120.150J



Infra-Red
Data transfer



Self test
Day. Week. Month



Screen



IP55
Water and dust resistance



Sound volume
5 Levels



Carry Case
for AED and first Aid



Built-in Memory
ECG waveform

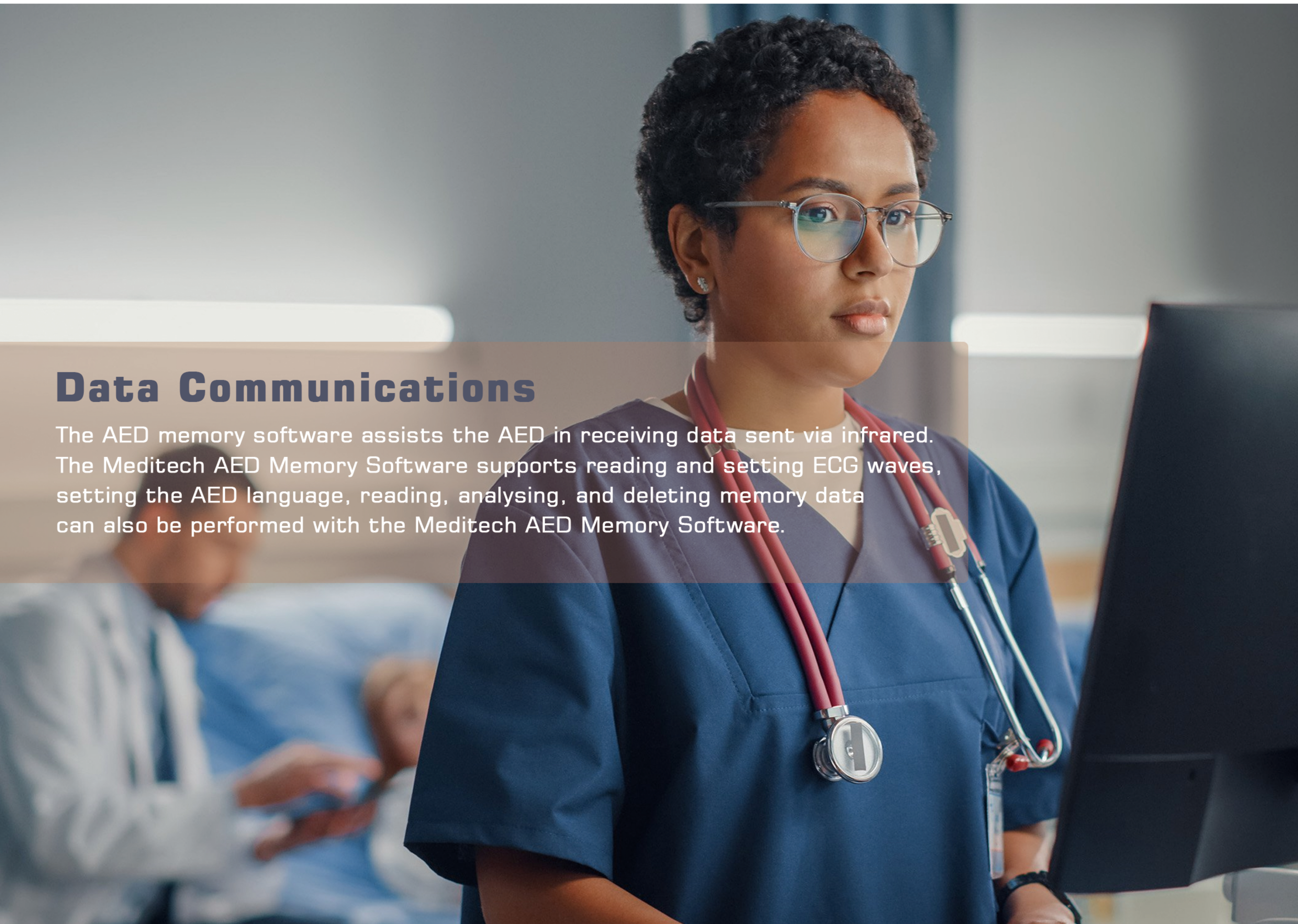


Biphasic function



ECG

- 2 Languages to choose
- 5 Levels of sound volume
- 2 Energy to choose for Adult mode
- 2 Energy to choose for Child mode
- Infra-Red for data transmission
- Daily, Weekly and Monthly Self-test
- Using the AED while in the bag



Data Communications

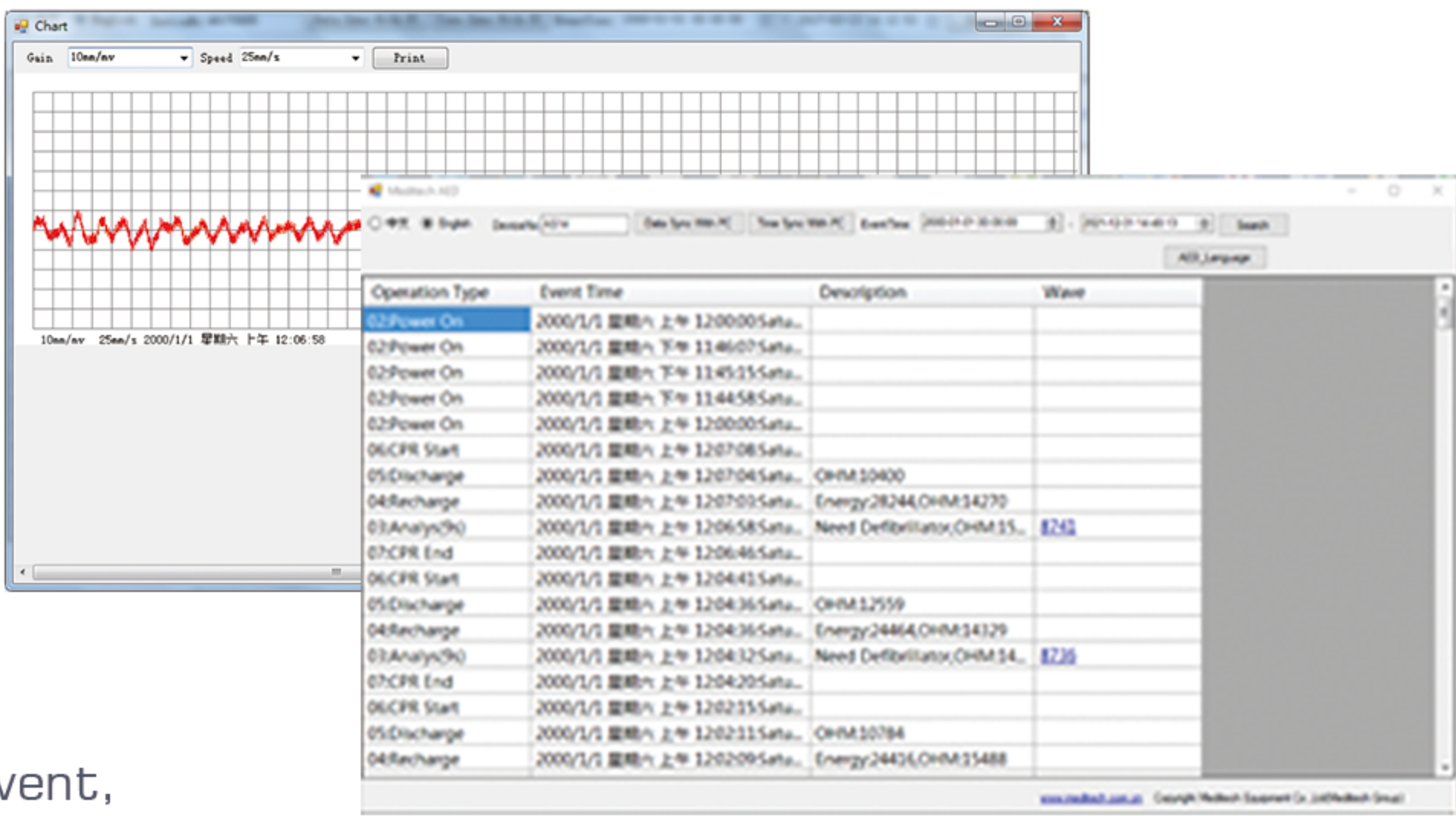
The AED memory software assists the AED in receiving data sent via infrared. The Meditech AED Memory Software supports reading and setting ECG waves, setting the AED language, reading, analysing, and deleting memory data can also be performed with the Meditech AED Memory Software.

- **Case Management**

Meditech's AED storage software makes the selected data file a case record and stores cases in the database ACCESS. Case management supports importing and deleting data that can respond to the ECG waveform of the data file by selecting cases.

- **Memory Playback**

The interface displays status information recorded during AED operation, including type, event time, description, and waves. Event types include: Power On Event, Self Test Event, Analysis Event, Charge Event, Discharge Event, CPR start event, CPR stop event. The event time displayed indicates when the event occurred. The description displays the parameter information. "OHM" represents the detected impedance of the patient. The parameter "Pxower" stands for the voltage of the completed charge; "Shock required" means that a shock is recommended after the analysis is complete "No shock required" means that no shock is recommended after the analysis.



Gain

10mm/mv

5mm/mv

10mm/mv

20mm/mv

Speed

25mm/s

12.5mm/s

25mm/s

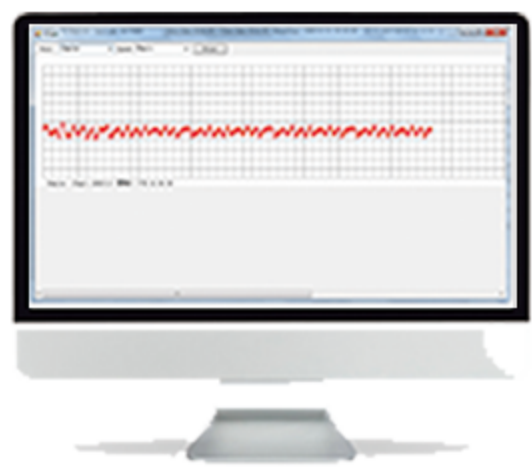
50mm/s

- **ECG**

Waveform gain can be set to 5mm/mv, 10mm/mv, 20mm/mv; Waveform speed can be set to 12.5 mm/s, 25 mm/s, 50 mm/s:

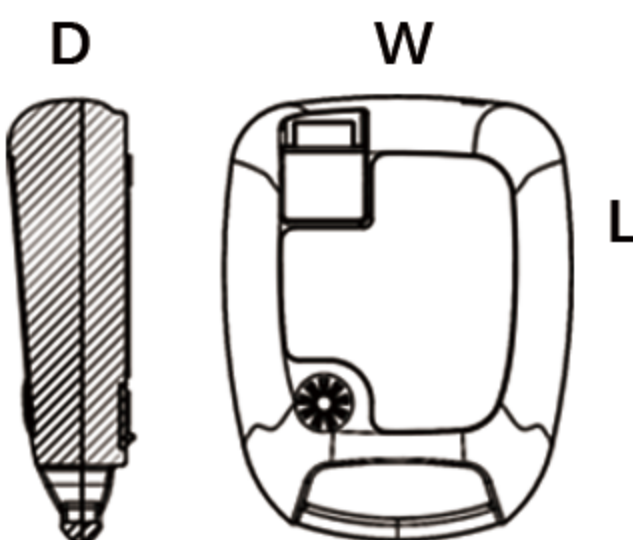
- **Print**

Can preview the selected page and print basic information



Technical Specifications

Self-test Mode	Daily, Weekly, Monthly
Waveform	Adult, Child
Energy	Biphasic truncated exponential
Energy Sequence	200-Joules max.
	Child Mode:
	50.50.75 Joules
	30.30.50 Joules
	Adult Mode:
	150.150.200 Joules
	120.120.150 Joules
Charge time (New, at 25°C)	Less than 8 sec. to 150J
Voice Prompt	Less than 12 sec. to 200J
Visual Indicators	Extensive voice prompt
Control	LED prompts
	Two buttons:
	ON/OFF, Shock
Display	Device situation. AED Use.
	ECG Rhythm. CPR proccess
ECG Monitor	ECG Speed: 25mm/s ,ECG
	Gain: 10mm/mv
ECG storage	1,800 events
Data transmission	Infrared
Type	Battery non-rechargeable
Power	12V, 2800mAh Li-MnO2 Cell
Operating Temperature	0°C to 40°C
Operating Humidity	Relative humidity between
	30% and 95% (non-condensing)
Storage Temperature (without battery)	-20°C to 55°C
Storage Humidity (without battery)	Up to 93% (non-condensing) Physical
Storage Temperature (Disposable Pad)	0~50C
Dimensions	Depth (D): 80mm
	Width (W): 240mm
	Length (L): 300mm
Weight (with battery)	1.9Kg (4.2 Pounds)



Accessories

Battery

CR123A - 4x2 2.8Ah 12Volt
non-rechargeable battery

Disposable Pad



Designed for external defibrillation,
non-invasive pacing, synchronized cardioversion,
and monitoring of adults and children
weighing more than 20 kg (55 lbs).

Carry Case

- 1 Reflective sign
- 2 Soft hand
- 3 Speaker protection
- 4 Transparent plate
- 5 Socket protector

